

# Modern newspaper premises



TARANAKI Newspapers Ltd's new building, seen from the junction of Currie and Powderham Sts, New Plymouth. On the ground floor are, from left, the main entrance, executive offices (to the corner), advertising department, the commercial printing department, the loading bays and the press room. On the first floor are, from left, The Daily News literary department and the composing room.

## NEW PRINTING CENTRE

Taranaki Newspapers Ltd's new building was designed and built to house many departments in an efficient way which left scope for future expansion.

Construction work started in July 1964. Soon afterwards the demolition of the old Sargood's warehouse on the corner of Currie and Courtenay Sts—part of the construction site—began.

Part of the old Herald building was also demolished. This and the warehouse have been replaced by an attractive office and editorial block and a new production and printing centre at its rear.

This made possible the

printing of the Taranaki Herald and The Daily News on the same rotary press, and the vacating of The Daily News building on the corner of Currie and Powderham Sts.

Because of the slope of Courtenay St the new building has two floors on to Currie St and at the lower end of Courtenay St. The ground floor includes the main public and administrative offices, with the commercial printing department behind them.

On the first floor The Daily News editorial office has a corner position with behind it and on the same level, the newspaper composing room, the publishing department and the rotary press room.

The Taranaki Herald offices fronting Currie St area is artificially lighted and mechanically ventilated. The total new floor area is still situated on the 31,200 sq ft first floor but to facilitate the combined use of the Herald editorial staff a decorative effect. There have access to the first floor are also panels of Roman newspaper composing room coated concrete, which has covered hodgegway.

Eventually as a later second stage the Taranaki Herald building will be replaced by an extension to graphic case set in. Doors the new building along of anodised aluminium, as

The new building is constructed of reinforced concrete, with roofs of asbestos-oil-fired boiler, with fan heaters and convectors and long-run aluminium. The main working area is naturally lit with system to the commercial saw-tooth roof lighting, but printing room.

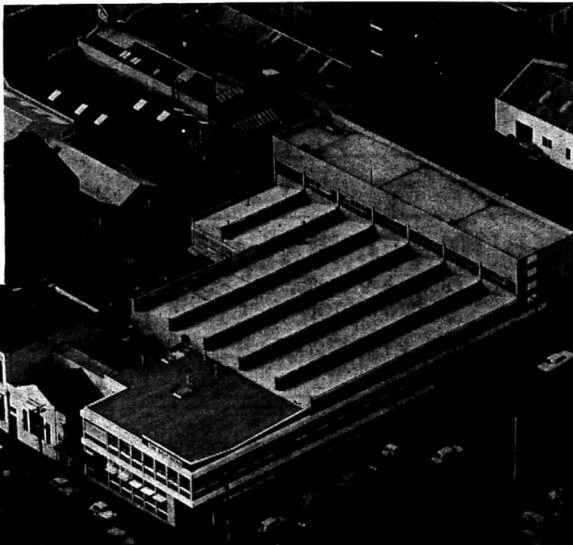
The main entrance is lined on one side with vertical boarding, with a photograph by a photo-

The heating system is an oil-fired boiler, with fan heaters and convectors and long-run aluminium.

The main working area is naturally lit with system to the commercial saw-tooth roof lighting, but printing room.

A handsome, modern building of which New Plymouth can be proud - that is Taranaki Newspapers Ltd's new £162,000 premises on the corner of Currie and Courtenay Sts, New Plymouth.

Next week the public will have the opportunity of making guided tours of the departments. They will see how the building has been designed to make best use of the site, and how the interior facilities contribute to the staff's efficiency and comfort.



TARANAKI NEWSPAPERS LTD'S NEW BUILDING, seen from the air. On the left is the present Taranaki Herald building, where future rebuilding is envisaged.

**BOWERING, THOMSON & ASSOCIATES**  
ARCHITECTS AND CONSULTING ENGINEERS, NEW PLYMOUTH.

TARANAKI NEWSPAPERS LTD. NEW BUILDING  
TARANAKI NEWSPAPERS LTD. NEW BUILDING  
TARANAKI NEWSPAPERS LTD. NEW BUILDING  
TARANAKI NEWSPAPERS LTD. NEW BUILDING  
TARANAKI NEWSPAPERS LTD. NEW BUILDING  
TARANAKI NEWSPAPERS LTD. NEW BUILDING  
TARANAKI NEWSPAPERS LTD. NEW BUILDING

BUILT by  
**RIDDICK BROS. & STILL Ltd.**  
REGD. BUILDING CONTRACTORS : 140 TUKAPO STREET NEW PLYMOUTH

TARANAKI NEWSPAPERS LTD. NEW BUILDING  
TARANAKI NEWSPAPERS LTD. NEW BUILDING  
TARANAKI NEWSPAPERS LTD. NEW BUILDING

# BRICKWORK

Always the best as you can see in the ROMAN BRICK used on the exterior of Taranaki Newspapers new building.

For inquiries regarding your brick laying, contact—

## DON GADSDEN

145 TUKAPO STREET, NEW PLYMOUTH  
PHONE 6099



## SOLID FOUNDATIONS:

Concrete Vibration by REMINGTON

### DALHOFF & KING (N.Z.) LTD.

PHONE 88527 — BOX 452 — NEW PLYMOUTH

## Carmichael & Co., (N.Z.) Ltd.

SUPPLIERS OF MACHINERY FOR ALL BRANCHES OF NEWSPAPER AND PRINTING PRODUCTION.

are pleased to have been associated with the growth of the TARANAKI NEWSPAPERS

through the use of

## LINOTYPE TYPECASTING MACHINES

and now with the

## PONY AUTOPLATE CASTING UNIT

OUR CONGRATULATIONS TO TARANAKI NEWSPAPERS LTD. ON A FINE NEW BUILDING



IT WAS OUR PLEASURE TO SUPPLY—

★ THE "CHUBB" STRONGROOM DOOR

★ "SIMPLEX" TIME SYSTEM

Automatic Control of the heating of lead pots.

Automatic Bells for announcing luncheon, tea breaks, etc.

★ "NAMCO" TABLES, CHAIRS

for New Cafeteria.

★ CLOTHING LOCKERS

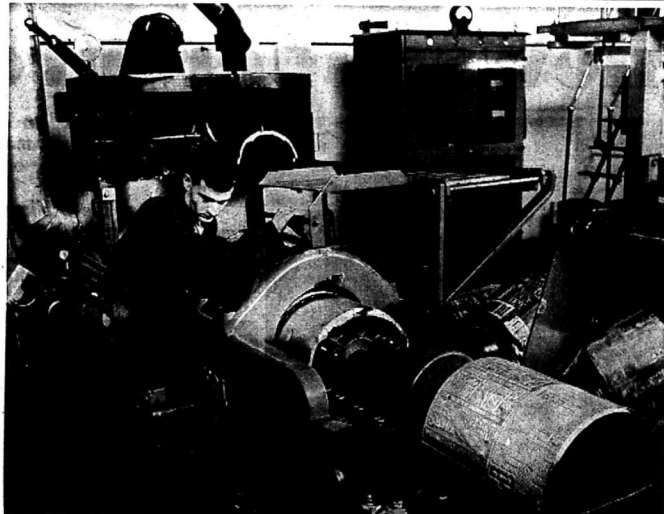
for Staff Members.

## BEECHEY & UNDERWOOD LTD.



OFFICE EQUIPMENT SPECIALISTS  
Office Machinery, Office Furniture

CURRIE ST. (Opp. Taranaki Newspapers) NEW PLYMOUTH



A VITAL STAGE in the production of the Taranaki Herald. The semicircular plate (lower right) bears the impress of a page of the Herald and is ready to be attached to the press. It has emerged from the casting box (behind operator) and the fall cutter (on which the operator is leaning). The fall cutter removes waste metal from the newly-cast plate.

# Faster than the eye can count...

Daily thousands of copies of the Herald — their pages neatly cut and folded without the touch of a hand — come from the press faster than the eye can count.

The Hoe rotary press, installed last year, is a highly sophisticated mechanical giant. It can print a 24-page paper at 35,000 copies an hour (nearly 10 a second), or 48 pages at 17,500 an hour.

The Hoe press was used for two or three years before coming to Christchurch in 1935, where it printed the Christchurch Star-Sun. The Star-Sun became the Christchurch Star in 1938. Painted in bright red, copper green, dark and light greys, and sparkling with polished brass, the machine stands 21½ feet high and 21½ feet wide in its own building fronting Courtenay St. By itself it weighs 112 tons, and with auxiliary equipment 130 tons.

### Complex

The press has many complexities, including 2 miles of 280 yards of electrical wiring. It is a three-unit double-width Hoe straight-line press with double delivery, powered by an 85-hp alternating current motor.

When a button is pressed each of two or three reels of newspaper begins feeding 4½ miles of paper through a maze of revolving cylinders and rollers. The paper follows an intricate, continuous course from one end of the machine to the other, and emerges in a stream of cut and folded newspapers ready for delivery to subscribers.

Particularly impressive is the capacity of each reel—two of them can unwind enough newspaper for 12,000 14-page newspapers. Their average weight is 1600 lb. Their diameter is 3ft and the width of newspaper they carry is 67½ in.

The press can be enlarged for the addition of a further four units. Housing the Hoe press is an oblong building in Courtenay St. eastwards of and next door to the main building on the south-eastern corner of Currie and Courtenay St.

Specially reinforced to resist the weights and stresses imposed on it, the press building is 132ft long, 27ft wide and 32ft high. The southern end has storage room for 300 tons of newspaper reels—and there is space for another 50 tons in the old store on the eastern side.

With the help of a motorised stacker, the reels are formed into fat pillars four reels high, reaching well towards the roof and nesting together.

At the northern end of the building, under the shadow of the lowering press, is the stereotyping department. Here a pony autoplate casts semi-cylindrical plates in a mixture of lead, antimony and tin from a papier mache impression of a page form of type, at the rate of one a minute.

The plates, patterned on the outer side with raised shapes of the type, are clamped to the press—and, gathering speed, the printing process begins.

At the other end of the press, two continuous ribbons of newsprint, already printed, are flowing down over triangular metal contrivances (called formers) to give the newspaper its first fold.

At the complete newspaper, pages cut and folded, appear faster than the eye can follow them. The frame conveyor's mechanism accepts them, raises them and carries them to the western side of the building, where they are delivered through a hole in the wall 9ft high into the adjoining publishing room.

Here a team of men accustomed to this hectic, organised rush seize the papers fresh from the press and prepare them for delivery.



## CONGRATULATIONS TO TARANAKI NEWSPAPERS LTD.

ON THE OPENING OF THEIR NEW BUILDING

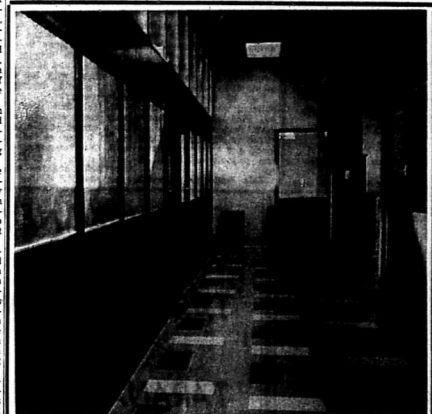
BARLOW'S RADIO TELEPHONE SERVICE LTD., ARE PLEASED TO HAVE BEEN ABLE TO SUPPLY AND INSTALL THE INTERNAL COMMUNICATION EQUIPMENT FOR THIS FINE BUILDING AND ALSO FOR W. R. PHILLIPS LTD., TASMAN HOTEL, TARANAKI BREWERY LTD. AND OTHER ORGANISATIONS IN TARANAKI, WANGANUI, KING COUNTRY AND HAWKES BAY.

CONTACT US FOR INFORMATION ON ANY COMMUNICATIONS PROBLEM

## BARLOWS RADIO TELEPHONE SERVICE LTD.

COMMUNICATION AND ELECTRONIC ENGINEERS  
HORI STREET, NEW PLYMOUTH

28 HORI ST. NEW PLYMOUTH Ph. 84642  
2 SOMME PARADE WANGANUI Ph. 5397  
STORTFORD LODGE HASTINGS Ph. 89351



## McMILLAN Demountable Partitioning

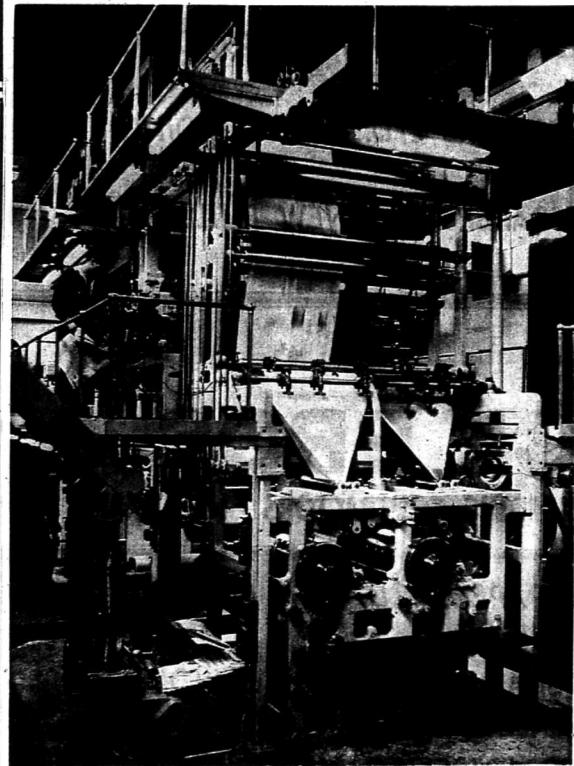
We congratulate TARANAKI NEWSPAPERS LTD. on their choice of McMILLAN FLUSHWALL DEMOUNTABLE PARTITIONS in the sub-division of their new office block.

McMILLAN Demountable Partitions chosen for this contract have incorporated hollow core and soundproofed lead core panels, manufactured to the Architects specification and fulfilling his special requirements.

McMILLAN Demountable Partitions have also been used in the entire sub-division of the imposing New Government Life Building, New Plymouth.

MANUFACTURED and ERECTED by

J. L. McMILLAN & CO. LTD.  
PALMERSTON NORTH



THE GLEAMING PRESS of Taranaki Newspapers Ltd runs off copies of the Taranaki Herald at high speed. The newspapers are carried by the conveyor (lower left) to the publishing department.

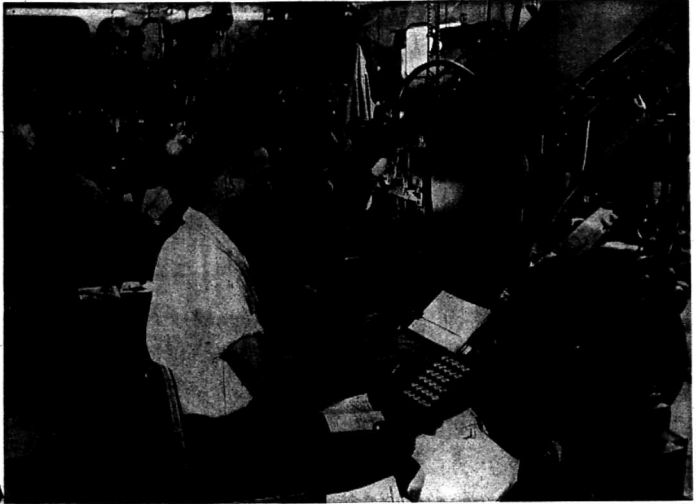
for the modern touch with

# GLASS

always consult

## Smith & Smith LIMITED

THE ONE-STOP DECORATORS SHOP



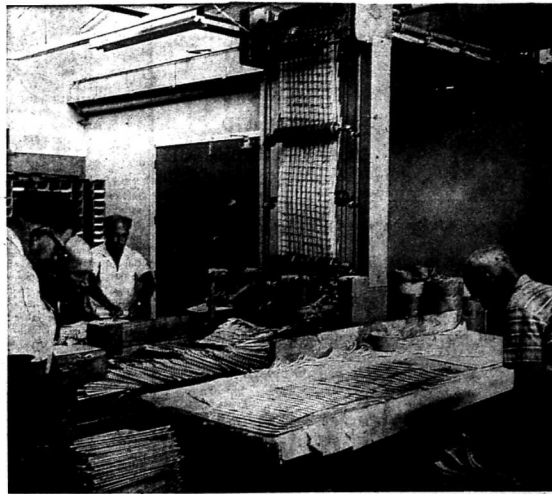
FOUR MEMBERS of the team of 17 linotype operators in Taranaki Newspapers Ltd's composing room who help produce the Herald each day.

### Big money

The annual wages bill for the 388 permanent and 361 part-time staff of Taranaki Newspapers Ltd is £279,444, most of which is spent in Taranaki. The replacement value of the company's buildings is £301,339 and that of the plant, machinery and equipment is £328,105. In a year 1398 tons of newspaper, valued at £92,413, are consumed.

### Main office is well equipped

The main office of Taranaki Newspapers Ltd's new building is equipped for high efficiency. When news or advertising copy has to be sent from the main office to the sub-editors or the composing room, there is no delay. The copy is placed in cassettes which in turn are inserted into tubes. Compressed air whisks them quickly to their destination. The noise level in the main office is low—partly because the company's telephone operator works in an adjoining room. The company's ledgers are stored conveniently close to the main office.



COPIES of the Taranaki Herald move down the conveyor in Taranaki Newspapers Ltd's publishing department, where they are prepared for distribution.

## Yes, It Was Us

WE ARE PROUD to be associated with TARANAKI NEWSPAPERS and to have carried out the Draining, Plumbing and Heating installations for this building. We are proud of this job, also, all other-contrats that have been entrusted to us.

This service is yours also for all your Plumbing and Heating requirements.

## F. D. McINTYRE LTD.

303 SOUTH ROAD PHONE 82563 NEW PLYMOUTH

## HE FOLDED THE PAPERS BY HAND

"THE press was old and very slow in those days . . . it used to print about one paper a second," said 92-year-old Mr J. Uncles, of Junction Rd, near Inglewood.

He was remembering the details of his boyhood job, which involved folding copies of the Taranaki Herald by hand and taking them to the New Plymouth railway station, where they were offered for sale on a bookstall.

Mr Uncles isn't sure exactly how old he was when he held this job. But he remembers that Yems Hoskin, Joe Hooker

and Mark Williams were working in the Herald's printing department. "Berrie (Hercules Moon) came afterwards," he recalls.

"The bookstall where I worked was the first bookstall on the station. We used to sell magazines like the London 'Punch', cigarettes and other things."

2/6 A WEEK  
Born in New Plymouth, Mr Uncles left school when he was eight. His first wages were 2/6 a week. "I stayed in New Plymouth until I was 10 or 12 and then I went to Hawera to learn cooking," he said. "I worked at the Commercial Hotel," and the Empire Hotel.

After a period working in racing stables Mr Uncles took a job at the Egmont Boot Factory in New Plymouth. "However, I didn't like the trade, so I learned carpentry instead," he commented.

"Then I thought I would like a change, so I walked to Inglewood and found a job felling trees and stacking timber. Later I got a job in the gravel pit quarrying stone. Then I got married, and started building houses.

"We used to build a five-roomed house for £30—that was for the materials, not including the labour. I must have built 75 houses in the Inglewood district altogether and cow sheds too."

Mr Uncles said he remembers when "you could buy a motor car for a fiver. "And now I'm 92," he added.

"How do I feel? Well, I'm not so bad . . . for a boy, I still have three acres, and I buy three or four calves and sell them as springers; I walk to Inglewood—that's two miles."

### Special camera

A special camera which makes the printing of certain commercial material a quicker and easier job is the latest acquisition of Taranaki Newspapers Ltd's well equipped commercial printing department.

The camera—the size of a large oven—photographs a sample sheet. The image on the resultant negative is then transferred to an aluminium plate. The plate is affixed to an offset press, and copies are rolled off within minutes.

By earlier methods the entire wording of any such sample sheet had to be set up in type—a time-consuming operation.

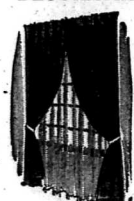
The installation of a conveyor belt is planned in the new building's publishing department. The belt will carry bundles of newspapers from the conveyor which brings them from the area to the loading ramp outside the publishing department.



MR J. UNCLES, photographed at his home in Junction Rd, near Inglewood.

## CONSULT YOUR HOME DECORATING AND SOFT FURNISHING SPECIALIST

ANOTHER ACHIEVEMENT IN COMMERCIAL WINDOW DECORATING THROUGHOUT THE NEW BUILDING FOR TARANAKI NEWSPAPERS LTD.



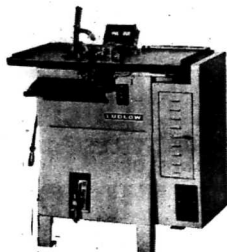
## ANNE O'CONNOR

HOME DECORATOR AND SOFT FURNISHING SPECIALIST OPPOSITE STATE THEATRE PHONE 84528 NEW PLYMOUTH

## OUR CONGRATULATIONS TO TARANAKI NEWSPAPERS LTD. ON THE OPENING OF THEIR NEW BUILDING

The publication of two City Newspapers on one premises is a bold step forward and marks a new era in Newspaper production in New Zealand.

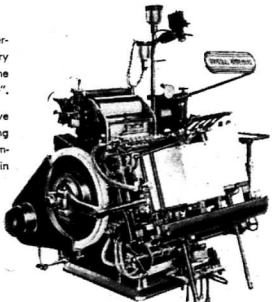
TARANAKI NEWSPAPERS LTD., as printers of the Daily News and Taranaki Herald, demonstrate by such a progressive move their complete confidence in the future prosperity of the Taranaki Province and its thriving commercial centre of New Plymouth.



LUDLOW "M" SLUG CASTING MACHINE

It is our pleasure to have been associated with both papers for many years and also in the current move and such progressive development makes us proud of our position as machinery and equipment suppliers to the newspapers of New Zealand.

The Ludlow Type Casting machine is extensively used throughout New Zealand for the production of advertising and headline slugs, for printing newspaper headlines, etc. We illustrate on the left the latest version of this machine which, along with its complementary machine, the Erod lead and rule caster, continues to be improved and developed.



Many New Zealand newspaper houses have Commercial Printing Departments and we can claim that every such department in New Zealand has at least one printing machine with the name "HEIDELBERG".

We illustrate here the smallest of the extensive Heidelberg range of Letterpress and Offset printing machines, and which forms the basis of most Commercial Printing establishments in New Zealand—in fact, throughout the World.

ORIGINAL HEIDELBERG PLATEN, 10in. x 15in. "Workhorse of the Graphic Arts"

## A. M. SATTERTHWAIT & CO. LTD.

Head Office: Christchurch

AUCKLAND — PALMERSTON NORTH — WELLINGTON — DUNEDIN

Suppliers to the New Zealand Graphic Arts

## A STEEL ROOF TRUSS BEING HOISTED INTO POSITION TO HELP CARRY THE ROOF OVER TARANAKI NEWSPAPERS NEW PREMISES

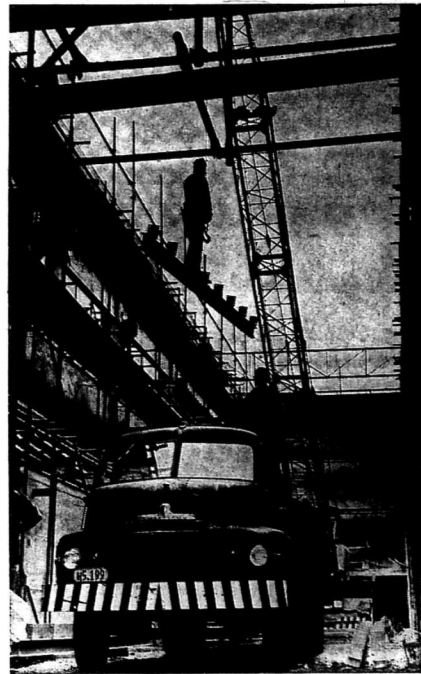
# ALL STEEL

for THIS BUILDING

was FABRICATED

and ERECTED

by TARANAKI'S FOREMOST ENGINEERS



# SWANSON ENGINEERING COMPANY LIMITED

STRUCTURAL — MARINE — GENERAL ENGINEERS

DEVON ST. WEST

NEW PLYMOUTH

PHONE 5409



CONGRATULATIONS  
TO  
RIDDICK BROS. &  
STILL LTD.  
AND THE ARCHITECTS

Once again it has been our privilege to be associated with Riddick Bros. and Still Ltd., and Bowering, Thomson and Associates, in supplying all the builders' hardware for Taranaki Newspapers Ltd.'s new premises.

# JOHN BURNS & CO. LTD.

241 DEVON STREET EAST, NEW PLYMOUTH  
(OPPOSITE STARK & LOW LTD.)

## New phone system

TARANAKI NEWSPAPERS LTD's new telephone system, which operates throughout the company's new building and the present Herald building, has two features which are unique in Taranaki. They are the "message waiting" and the "in and out" services.

The "message waiting" service operates when a caller from outside the buildings asks for a staff member who happens to be away from his office. On his return he finds a light flashing on his telephone. He contacts the operator, who tells him the identity of the caller and passes on any message.

The "in and out" service operates when a staff member intends to leave his office. If he is about to leave the buildings he presses an "out" button which registers on a turret near the operator. If a caller asks for the absent staff member the operator can say immediately that he is out and ask the caller to leave a message. If the staff member intends to stay within the

buildings he presses an "in" button. If he is wanted by a caller, the operator sets in motion the "code call service" — she dials the staff member's extension number. A coded pattern of lights flashes in every office in the buildings; the staff member recognises his code signal, goes to the nearest telephone dial 41 and is immediately connected with the caller.

These services save the operator from having to call department after department to find staff members, said a Post Office spokesman. "They also mean that the staff are not committed to remain within one office — they can move to any part of the buildings and they will still be found."

Another service is the night-answering arrangement. Any staff member who hears the night service bell (a continuous ring) can contact the caller immediately by dialling 2.



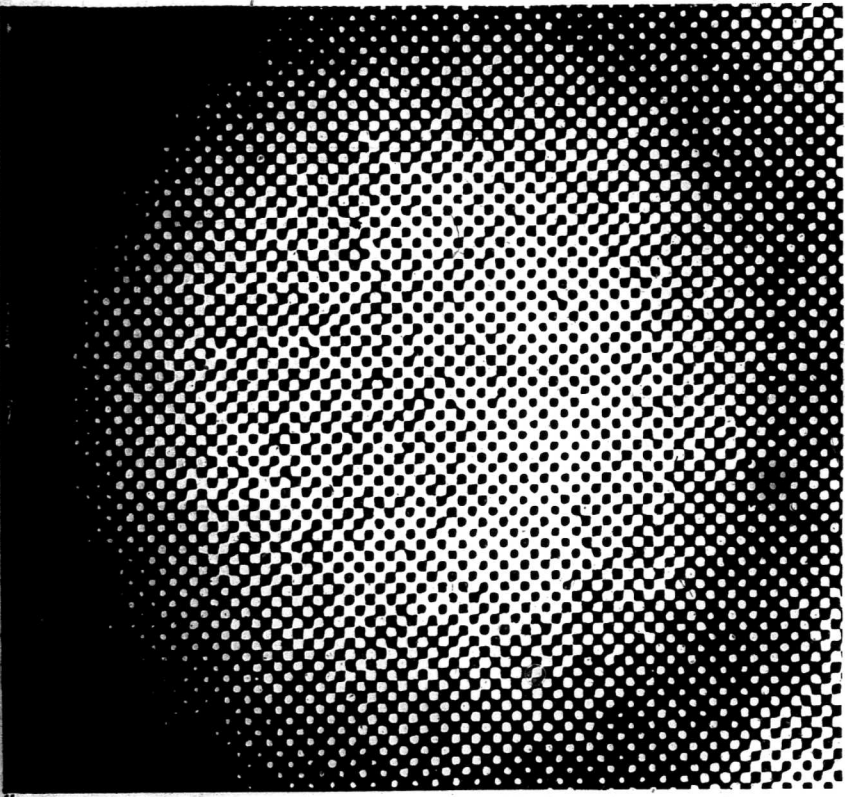
SPACIOUS and well-lit, the main office of Taranaki Newspapers Ltd's new building provides excellent working conditions. In the centre background are the tubing which carry advertising and news copy to sub-editors and the composing room.



OFFICE GIRLS in the main office of Taranaki Newspapers Ltd's new building type advertisements telephoned by clients. Behind them is the company's switchboard operator, who works in an acoustic-tiled room.



LEDGER OPERATORS posting credits in Taranaki Newspapers Ltd's ledger room.



## Your friend the atom works in a concrete cell in NZ's first major peaceful use of atomic energy

Re-inforced concrete walls up to 5 ft. 6 in. thick will form the irradiation chamber in Tasman Vaccine's new Gamma Sterilisation Plant being built in Upper Hutt. Over 1,000 tons of concrete will be used in the building.

The purpose of this plant is to sterilise medical dressings and New Zealand manufactured medical disposables, for use in New Zealand hospitals. It is the first plant of its kind, designed for sterilisation by atomic energy, to be built in the Southern Hemisphere, and it is amongst the first of its kind in the world.

The energy source for the plant will be the radio-isotope, Cobalt 60. Items to be sterilised will be carried automatically by a conveyor into the irradiation chamber, where the item will be exposed and sterilised. They will then be conveyed back to the factory for packing. There will be no radiation residue in the dressings.

The irradiation chamber will have a 20 ft. deep pool of filtered water. When the energy source is not in use and when inspection is necessary, it will be lowered into the pool.

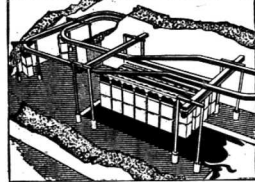
The air in the plant will be filtered and many other safety features will also be incorporated. As a part of these safety measures, construction throughout is of re-inforced concrete. The 5 ft. 6 in. thick walls and 4 ft. 2 in. thick roof of the irradiation chamber make it possible to concentrate all radiation into the sterilisation area.

When completed, the building will incorporate over 1,000 tons of re-inforced concrete. Golden Bay cement will be used throughout.

Atomic energy will work for New Zealand industry in Tasman Vaccine's Gamma Sterilisation Plant. Another achievement made possible by the strength and versatility of concrete.



This concrete building, with walls up to 5 ft. 6 in. thick, will contain the energy source, Cobalt 60, in Tasman Vaccine's Gamma Sterilisation Plant.



The interior of the irradiation chamber showing items to be sterilised in containers running along the conveyor.

Men who think in terms of concrete... think of

**GOLDEN BAY**

Ordinary Portland Cement and Rapid Hardening Cement

Building contractor: Downer & Company Ltd.  
Consulting engineers: J. K. Clime & Associates.  
Plant: Atomic Energy of Canada Ltd.

# AGAIN

## ANOTHER FLOORING ACHIEVEMENT

TO THE CREDIT OF FLOOR STYLE'S THOUSANDS AND THOUSANDS OF

# VINYL FLOOR TILES

So Colourful... So Effective... So Long Lasting  
COVER THE HUGE FLOOR SPACE AREA IN THIS NEW BUILDING

## AND WALL-TO-WALL CARPET

IN EXECUTIVES' OFFICES AND POLY-FLOOR VINYL INLAID IN MODERNISTIC PATTERNS ON WALLS IN MAIN OFFICES AND STAIRWAYS

ALL INSTALLED BY THE FLOORING SPECIALISTS

We can render a Home Service that is incomparable and ensures complete satisfaction

★ Our Flooring Specialist will gladly call and measure and quote with no obligation whatever ★

YOU CAN BUY ON THE EASIEST OF CREDIT TERMS



**FLOOR STYLE LTD**

ON THE FLAT — DEVON STREET EAST

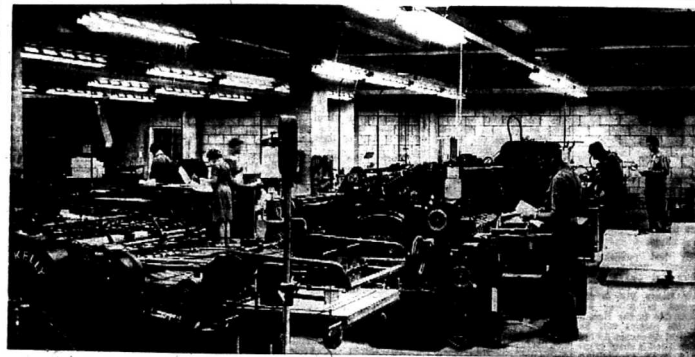
PHOTO LITHO - FLEXOGRAPHIC - INK MANUFACTURERS - STEEL EQUIPMENT

MONOTYPE - ELECTRONIC ENGRAVING - PROCESS ENGRAVING COMPOSING

# MORRISON PRINTING INKS & MACHINERY LTD.

NEW ZEALAND'S LEADING SUPPLY GROUP TO THE PRINTING INDUSTRY ARE PROUD TO BE ASSOCIATED WITH THE ADVANCEMENT OF TARANAKI NEWSPAPERS LTD.

BINDERY - LETTERPRESS - OFFSET



A GENERAL VIEW of the printing presses in Taranaki Newspapers Ltd's modern commercial printing department.



TWO STONE HANDS, bending over formes, make up pages of the Taranaki Herald in the composing room of Taranaki Newspapers Ltd's new building.



PROOFREADERS at work in their spacious new room in Taranaki Newspapers Ltd's new building. Two different kinds of lighting are available—incandescent bulbs or fluorescent strip.



A CAFETERIA for the staff of Taranaki Newspapers Ltd has been provided in the old Taranaki Herald building since the completion of the company's new building.

## Press-button communication

COMMUNICATIONS between certain offices in Taranaki Newspapers Ltd's new building are made particularly easy and efficient by two new systems.

One of the inter-communication systems is believed to be the most modern of its type in New Zealand. There is only one other like it in Taranaki. Made in Sweden, it is fully transistorsised.

This system is technically described as a multi-line system in miniature—an arrangement which is especially suitable for installations in a department office.

The system inter-connects six parties.

The main advertising department office.

The advertising manager.

The assistant advertising manager.

The matrix library room for matrices related to advertising.

The compositors who compose display advertisements.

The newsroom foreman.

Each party can be connected to any other party simply by pressing a button.

The other system connects the company's works manager and the commercial printing manager with the engineers' workshop, the stereo room, the mechanics' corner, the paper store, the advertising compositors' room and the machine room.

The works manager and the commercial printing manager can also contact each other.

### Wirephoto pictures

Taranaki Newspapers' wirephoto room is equipped to receive and process news pictures sent by toll line from main centres in New Zealand and radio and cable pictures from overseas.

Less than 15 minutes elapses from the moment the wirephoto receiving machine begins to receive a picture until the developed print is handed to the sub-editor.

Facilities have been included in the wirephoto room for the future installation of a wirephoto transmitter.

We fixed the Beautiful Tiles suspended in Grecon Metal Frame System in Taranaki Newspapers' New Building

# R. HOYLE & SONS

MOLESWORTH STREET, NEW PLYMOUTH  
P.O. BOX 194, PHONE 88373

TARANAKI AGENTS for . . .

"GRECON" SUSPENDED CEILING  
"ZELLCOTE" Acoustical Plasters  
DISTRIBUTORS of . . .  
"HORIZON" Aluminium Doors and Windows

## TARANAKI NEWSPAPERS LIMITED.

chose

# DUNLOP VINYLEX FLOOR TILES

for their new building

Congratulations to Taranaki Newspapers Limited on their new venture. We are proud to have supplied today's most modern flooring for New Zealand's most up-to-date newspaper building. Our Acknowledgements to Mr F. J. BOWERING, A.N.Z.I.A., who specified DUNLOP VINYLEX FLOOR TILES for this fine addition to the City of New Plymouth.

## DUNLOP NEW ZEALAND LIMITED

concrete by redinist

ARCHITECTS:  
Bowering, Thompson & Associates, New Plymouth.



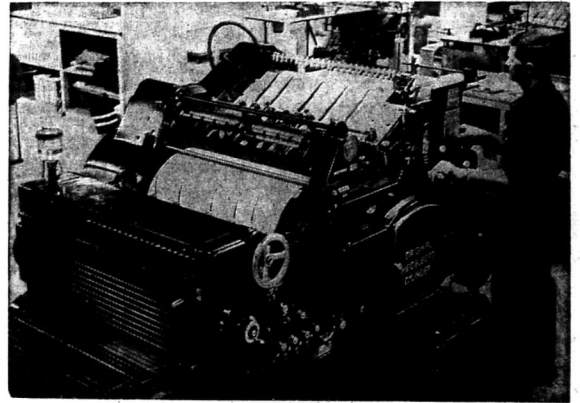
AUCKLAND • WELLINGTON • CHRISTCHURCH • DUNEDIN



# NOW UNDER ONE ROOF

The commercial printing section of Taranaki Newspapers is located in new premises giving a specialized service in **QUALITY PRINTING**

We are pleased to announce the consolidation of our Commercial Printing section into a large single unit. The establishment of machines and staff in modern commodious premises will increase efficiency and facilitate production. The up-to-date equipment in our new Currie Street premises, combined with the skill of experienced staff, ensures a first class service in all branches of Commercial printing.

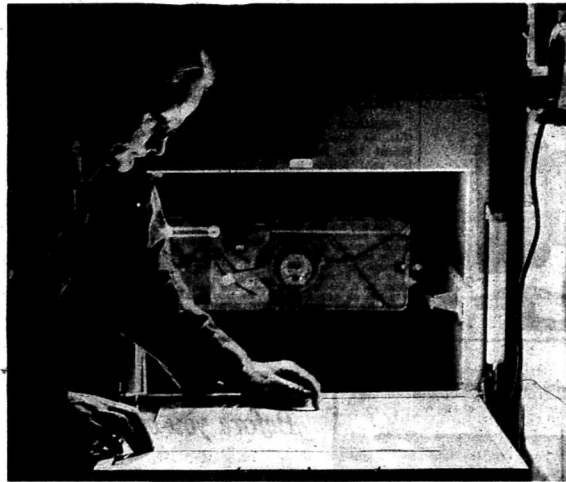


A Heidelberg Cylinder capable of printing sizes up to 20 x 30 at speeds of 4500 impressions per hour. This machine is automatic and requires only monitoring. It is unsurpassed for producing high quality letterpress printing. Three similar units are installed in the new premises.

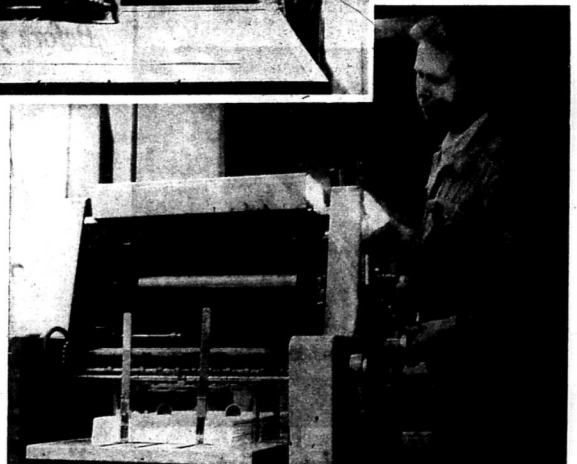
**SPECIAL NEW CAMERA INSTALLED TO PROCESS AND SPEED OFFSET PRINTING JOBS**



An automatic printing machine that is used for smaller jobbing work. Taranaki Newspapers has several of these units known as Flatens and recognised as the most serviceable machines available to the printing industry.



A special camera that will give large negatives which can be reproduced on printing plates in a short time, has been installed in the new premises. From copy to printing machine can be a matter of merely ten minutes. This is the ideal and most economical method of repeating existing printed matter in any quantity required. At left an operator prepares the new camera to produce a negative for offset plate making. Below, a machinist adjusts the offset printing machine to commence a run.



FOR PRINTING THAT KEEPS PACE  
WITH THE TIMES

Consult

## TARANAKI NEWSPAPERS LIMITED

NEW ENTRANCE NOW OPEN AT CURRIE STREET, NEW PLYMOUTH  
Ask for Mr Neil Blackhall - Commercial Printing Manager  
IF PREFERRED, A REPRESENTATIVE WILL CALL

Phone 6559

P.O. Box 444

New Plymouth