

the Waterfront in New Plymouth



UP FRONT: The striking frontage of The Waterfront complements the nearby Puke Ariki design and its seafront location.

Modern or Classic from the floor up

You can enjoy all the comfort, warmth and beauty of natural wools from NZ.

Rapley Flooring Ltd.

New Plymouth: Td. 758 6554, Fax: 757 8351
 Showroom: 47 Moleworth St
 Hawera: Td. (06) 278 7887
 Showroom: 91 Glover Rd

THE QUALITY OF NEW ZEALAND WOOL

THE DAILY NEWS
GARDEN lifestyle
Every Friday



- Attentive service
- Stylish function facilities
- Luxurious accommodation
- Exemplary dining experience

Continued p12

Galvin has the ideals!!!



Phone now to invest in Industrial and Commercial Property

Harcourts

DEVON REAL ESTATE LTD

elegance
 simplicity
 sophistication

TGM Design thanks Sue and Neil for the fantastic opportunity to manage all brand development for the Waterfront and Salt.

the Waterfront

Mix of elegance and relaxation

Stories: SARAH GAULT
 Photos: TREVOR READ

SOMETHING about coastal places must appeal to Sue and Neil Drought.

The owners of New Plymouth's newest hotel, The Waterfront, owned an Opunake dairy farm before building a Tauranga motor inn. And when time allows they head home to their Okara house.

Sue alludes to the lure of the sea when she talks of the Waterfront's development and its stand out features. "We would not have done this if we had not had the site. Its location makes it unique in New Plymouth."

Promotional material for the establishment plays on the seaside theme: the Waterfront's catch line is "Simply watch the waves roll in."

And a tour of a penthouse suite confirms the truth in that phrase. Situated on level three, the spacious suite boasts floor to ceiling balcony doors, wide windows and classy surroundings. Sink into the leather sofas and it's easy to feel bewitched by the ocean's rhythms.

Positioned as it is across the road from the city walkway, there's no chance the ocean views will ever be

obscured from this hotel. The only thing likely to overshadow guests' appreciation of the Tasman is a container ship.

The other thing that characterises this hotel is what Sue calls the "level of fit-out". That is its soft furnishings, interior colours, furniture, lighting, joinery, cabinetry and stylish finish.

The intention was to create an elegant establishment that was on the one hand sophisticated, on the other hand inviting and conducive to relaxation.

Initially the Droughts planned to build a motel or motor inn but a canvass of existing accommodation options changed their thinking. "We decided New Plymouth needed an upmarket hotel on the waterfront," says Sue.

This is not the Drought's first foray into the hospitality industry. After selling their Opunake farm three years ago they moved to Okara, renovated their home there and bought commercial property in Hamilton. They also built a motor inn in Tauranga and installed managers on the site.

Then came time to contemplate other options. "We thought, 'What

congratulations!

Sue and Neil

on their vision and contribution to the economic and cultural wellbeing of the most progressive region in New Zealand

Phone the specialists in the hospitality and waterfront sectors.

(06) 757 5080 - New Plymouth
 (06) 765 6156 - Stratford • (06) 278 0019 - Hawera

Hutchins & Dick

PROPERTY AGENTS AND AUCTIONEERS

Simply watch the waves roll in...

We congratulate Neil and Sue on the completion of the Waterfront Hotel



RAWLINSONS

RAWLINSONS LIMITED
 29 Carrington Street,
 New Plymouth
 Phone (06) 758 0814
 Fax (06) 758 0815
 Toll Phone (025) 505 680
 P.O. Box 604, New Plymouth
 Resident Manager -
 Ken Hutchinson

QUANTITY SURVEYORS

CONSULTANTS

COST ENGINEERS

CROMBIE & LOCKWOOD

New Zealand's Insurance Brokers

We always guarantee you :

- comprehensive policy protection
- a specialist commercial insurance broker
- qualified professionals to talk to

Congratulations to Sue & Neil on the opening of The Waterfront

Crombie Lockwood & McLean Limited
 Cnr Currie & Gill Streets, New Plymouth

Taranaki specialists in commercial insurance
 PH 06 769 8100 FAX 06 769 8111



Phone: (0508) the waterfront (0508) 843 928
 Email: stay@waterfront.co.nz Website: www.waterfront.co.nz

the Waterfront Penthouses in New Plymouth

THE WATERFRONT

"Look Up" and "Look Around"

we proudly installed the Ceiling and Wall Systems.

"Congratulations to Sue & Neil Drought for this fine local facility"



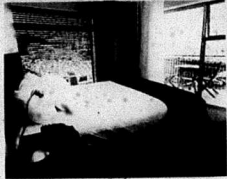
FORMAN

COMMERCIAL INTERIORS

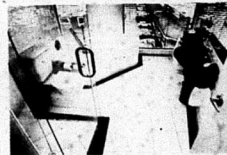
Installers of Ceiling and Wall Systems

Phone: 06 755 1381

www.forman.co.nz



ABOVE: Penthouse bedrooms enjoy magnificent sea views from third-storey settings.
RIGHT: The Waterfront lives up to its name in the outlook from its Salt restaurant.
BELOW: Luxurious penthouse bathrooms feature white tiles and black marble.



Front p11

are we going to do now. We can't sit around and do nothing," says Sue.

When the land on which the Waterfront now sits came up for sale, they took up the opportunity, anticipating the time and the location was perfect for a classy, seaside property.

The couple had hoped to open the hotel at Christmas in time for Taranaki's summer season but say that starting up at a quieter time proved to be a sensible move. "It gives us and the staff time to get up to speed and fine tune our systems," says Sue.

Inside, the Waterfront boasts 42 rooms – besides the three penthouse suites there are 39 other bedrooms, a restaurant called Salt and a conference room.

The interior colours are contemporary and consistent throughout. Walls, skirting boards, doors and other trims are painted in one of two grey-beige shades. The colours are strong

and smart, but neutral enough so they don't detract from the stunning vistas.

Dark contrasts are provided by carpet, furniture, joinery and cabinetry. There are the black leather sofas in the penthouse suites; in the other rooms, chocolate-coloured armchairs provide stylish seating.

The kitchen joinery, padded bed headboards and free-standing wardrobes are also chocolate brown, while underfoot the Cavalier Bromworth carpet is a paler shade of brown. On the beds, black mohair throws contrast with crisp white linen.

In the bathrooms, the dark arid light-contrasts are continued. The floor is laid with white tiles and trimmed around the edge in black. Smaller white tiles line the walls; the long, slim bathroom vanities are made of black marble and all the fittings are chrome.

All rooms feature ensuite bathrooms. The penthouse suites boast spa baths and handsomely sized showers; all the other rooms

have spa baths with the exception of the first floor.

The restaurant continues the same colours and style. White chairs are pulled up to dark tables, and padded chocolate brown booth seats face the sea.

To one side a set of padded booth seats provide a sharp contrast – covered in flame red and mandarin orange they are a pointer to the striking feature wall. Painted in great swathes of colour like a Cubist painting, it curves across the back of the restaurant behind which sits the kitchen.

The views from here – the second floor of the hotel – are superb. Inside, the restaurant is bathed in light and warmth, outside the balcony sweeps across the front, following the curve of glass wall that is the front of the restaurant.

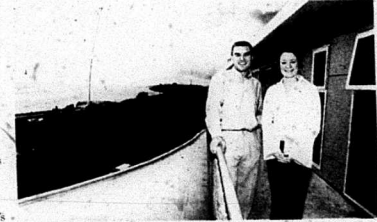
All this adds up to clean lines and a modern look. This was Sue's intention.

The Drought's decorated the hotel themselves, drawing on

their personal preference for unfussy interiors. "I know what I like. I don't like things to be cluttered and I like a spacious look," says Sue.

Interestingly enough, much of

the Waterfront's fit-out was completed locally. "I sought quotes from Auckland and Wellington retailers but in the end the locals came through and gave me very good prices," she says.



WOW: Waterfront assistant manager Angus Stewart and receptionist Hannah Bailey check out the penthouse views.

The Daily News
GARDEN lifestyle
EVERY Friday




CLELANDS CONSTRUCTION LTD

The Waterfront

Congratulations to Neil and Susan Drought for having the vision and commitment to create The Waterfront Hotel.

This high quality and stylish building sets a new benchmark for a superb accommodation and dining experience.

We have enjoyed putting this design and build development together with Neil and Susan Drought, Boon Goldsmith Bhaskar and Nagel Consultants, our subcontractors/suppliers and our dedicated construction crew. Well done everyone.

We wish the team at The Waterfront every success.



the Waterfront Business in NP Preparing meals fit for a king

DINERS at the Waterfront restaurant Salt, are likely to be served a meal fit for a king – or a politician, dictator or billionaire businessmen.

Executive chef Craig Sands has cooked for royalty and rich people around the world.

The 31-year-old returned to New Zealand two years ago, but before that worked for the King of Jordan. As the executive chef in Jordan's royal palace, he headed a staff of 73 and often traveled abroad, helping to prepare hosted banquets in the country in which the Jordanian royal family was visiting.

The job, which he held for four years, saw him prepare meals for King Carlos of Spain, the British royal family, Russia's former president Mikhail Gorbachev and Libya's Colonel Gaddafi.

The perks were fantastic – as well as a handsome salary with house and car thrown in, he received generous tips. He describes the King as a down-to-earth, friendly man who shared his interest in computers.

Craig landed the prestigious post through an agency after working in Aubergine, the London restaurant owned by high-profile English chef Gordon Ramsay.

But his Middle Eastern job wasn't the only one that saw him feeding wealthy people. Craig, who grew up in Southland and trained at Queenstown's Park Royal, was also executive chef at an exclusive 550-year-old castle in Scotland called Ackergill Tower.

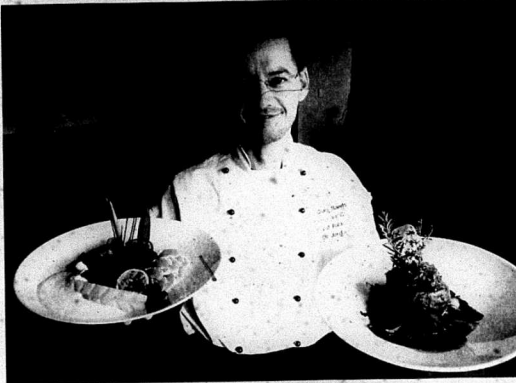
There he created menus for Bill Gates and Deutsche Bank who would fork out tens of thousands for a weekend stay.

But Craig's father's ill health brought him back to New Zealand. He worked in several jobs before applying for the top job at Salt. "I wasn't happy in my previous job. I saw the ad in the paper, came and had a look and decided to take it."

Asked to describe his special dishes, Craig lists Japanese, Italian and Middle Eastern but says like all the best chefs, his grounding was in classical French cooking. That's characterised by attention to detail: taking three or four days to make a jus, seeking out the freshest ingredients and preparing dishes in a certain way.

It's an approach he takes at Salt. "In everything we do, we try to use the finest quality ingredients we can source from around New Zealand."

"Our meat comes from what I think is the best supplier in the country, Gourmet Direct in Canterbury. My last tuna fillet came from Tonga. Salt, which opened last week and boasts a combined kitchen and restaurant staff of about a dozen, offers a varied menu. One of its most popular dishes has been a pumpkin, papaya and



ABOVE: Executive chef Craig Sands with examples of Salt's menu. BELOW: A meal laid out in a penthouse suite at The Waterfront.

coconut cream soup with seared scallops. Craig's vision for Salt is of a restaurant that encourages diners to linger.

"We want people to come in and have a good night, not be pushed out the door in a couple of hours. We want them to stay, savour different dishes and enjoy the surroundings."

Craig, who knew nothing about New Plymouth before starting at Salt, holds his new place of employment in high regard. The location and the rooms are fantastic. Let's say, if you could dig the hotel up and transport it to the West Indies or Japan you could charge at least \$1200 US dollars a night and between \$3000-\$4000 for the penthouse suites, no problem."

High praise indeed. But who needs exotic overseas locations when you can stay at the Waterfront in Nakivou.

Early teething problems with the ventilation system have been corrected and the restaurant is expected to be back in full operation from today.



BOON GOLDSMITH BHASKAR
101 Courtenay Street New Plymouth
Phone: 09 757 8545 Fax: 09 757 1344
Email: bpb@teamarchitecture.co.nz
www.teamarchitecture.co.nz

ALLIED CONCRETE

have the expertise, technology and customer support for all types of concrete work.

No job too big, no job too small

NEW PLYMOUTH, OKATO, WAITARA, STRATFORD, HAWERA 759-4201

Congratulations to THE WATERFRONT on the opening of their luxury foreshore hotel. Thanks Sue and Neil for selecting our professional services for this new city landmark.

Supplied by the metre or by the kilometre

Congratulations Sue and Neil on your new business venture.

Thank you for choosing **Karl Hunt Upholstery.**

•Restoration •Recovery •Repairs

QUALITY CRAFTSMANSHIP GUARANTEED

KARL HUNT UPHOLSTERER
PH/FAX 06 761 8700
52 Domett Street Opunake – Mobile 027 441 0425

FREE Quotes, Pick Up & Delivery Taranaki Wide

Reeves Middleton Young
Lawyers and Notary Public

Delighted to assist Sue and Neil Drought with The Waterfront

Legal advise on
...business structuring
...practical commercial advice
...liquor licensing

...what a great view!

Powderham Street, New Plymouth
Phone 769 8080 • Fax 757 9852
email rmy@rmy.co.nz • www.rmy.co.nz
is a participating member of www.howtolaw.co.nz

"We are delighted with the result of OFFICE FURNITURE FIRST'S furniture fitout, and their installation team really bent over backwards to make it happen. We'll be back for more!"

WIN Purchase any PRECISION product from our new showoom during May and June and go into the draw for a surprise night in Wellington

Creating dynamic business environments™
OFFICE FURNITURE FIRST

Proud to be associated with **The Waterfront**

Suppliers of the kitchens, interior doors, and all wooden joinery.

GLEN VALLEY JOINERY LTD
7a Euclid Street
New Plymouth
Phone/fax: 753-4791
Res: 752-7313

Members of the JMA

Robin Hartley

DUNLOP BEDDING

Ph 09 835 0138 • Fax 09 837 3424 • Auckland

Proud to have supplied the beds, for New Plymouths newest luxury accommadition.

We wish Sue and Neil at **The Waterfront** every success for the future.

Sleepmaker.

GLASS & MIRROR
FRAMELESS SHOWERS
SHELVING
FREE QUOTES

"We are PROUD! to have been chosen to provide all the Glass and Glazing for The Waterfront"

THE GLASS MAN

PIKINGTON **SMART GLASS**

HOURS
Mon-Fri 7:30am-5pm
Sat 9am-noon

06-758 3027

Fax (06) 757 8545, 147 Courtenay St, PO Box 4011, New Plymouth
Email: theglassman@xtra.co.nz

the Waterfront in New Plymouth Location a prime setting for hotel development

THE next-door neighbours and the seaside were key to the design and construction of the Waterfront.

Right from the start, it was clear the hotel had to complement museum and library complex, Puke Ariki, and capitalise on its prime seaside location.

It was a point Clelands were acutely aware of. Even before planning of the Waterfront got underway, the construction company had prepared a feasibility study into a 180-room hotel on the site. The five-level complex - called the Ariki hotel - would have extended along King St, incorporating the facade of the Masters building and the now-demolished Arcadia.

It was an ambitious project that attracted international expressions of interest but not the required investment.

The company went to the trouble of preparing such a study because of its conviction that the site and time was right for waterfront revitalisation, explains Peter Snowden, one of four company directors at Clelands. The others are Martin Stephens, Alistair Dore and Peter Cottam. Russell Mancer was the project manager for the Waterfront job and Chris Bell the site foreman.

"Martin and I had been away from Taranaki and when we came back eight years ago we could see New Plymouth had potential for development in a lot of areas.

"We acknowledged that over the years the city had turned its back on the sea and we thought this was a good opportunity to turn that around, to capitalise on the great views and the impending development of Puke Ariki.

Clelands was not the first to link the seaside location with guest accommodation.

The previous occupants of the site, Bond & Bond, converted the Lion Tavern into retailing premises. But back in the early



WELCOME: Reception staff, Hannah Bailey and Mark Drought, at The Waterfront's entrance.

days a wooden hotel stood on or near the site.

Where Sue and Neil Drought bought the land on which the Waterfront now sits, Clelands became involved again.

The project was a design build development, which meant the company secured the contract, then pulled in the expertise of architects Boon Goldsmith Bhaskar and engineers Nagel Consultants.

The confined site, bordered as it is by Puke Ariki, the

Masters building and St Aubyn St, shaped the planning and construction. Space had to be used economically. The car park was slotted underneath the hotel at basement level, as were vehicle entry and exit points.

There was also a need to fast-track construction to get the hotel finished on time. All up the project took 40 weeks (including demolition of the former Bond & Bond building), involved at its peak about 60 staff and finished on time and on budget.

A structural steel system called K-Brace was chosen because it met time pressure requirements.

The concrete floors were poured on site, the fabrication of the building followed, and the exterior was constructed from heavy-duty fibre cement panels called Hardie Titan panels and cedar weatherboards. The roof is an aluminum roof.

The materials were chosen not only for their looks but their durability; the rigours of the coastal location also influenced construction details.

Russell explains: "There couldn't be anywhere for salt laden air to sit, for example. We had to make sure everything could withstand the harsh elements."

Architect Murali Bhaskar says the client brief was quite specific, and the need to consider Puke Ariki and the coastal walkway were always uppermost.

Both the hotel and the museum are contemporary buildings exhibiting angular features and curved walls. At the hotel, tall exposed beams jut out on an angle from the balcony of the restaurant. They echo the steel construction of Puke Ariki, which boasts exposed beams and industrial details on its facade.

The hotel restaurant has a curved wall of windows called a faceted wall. The panels of glass that make up the seaward

will be set on a slightly different angle to create the curve. Neither the wall nor the exposed steel beams are plumb. For a carpenter that's an odd concept.

"We are used to having things plumb and square and here we are throwing out the rule book, but it gives the desired contemporary effect," says Russell.

Murali Bhaskar says the glass frontage allows restaurant and bar patrons good views unimpeded by reflection. "Natural materials and colours were chosen to echo walkway features," he says. For example, the sides of the exterior staircase leading up to the restaurant are enclosed by heavy timber held in place by stainless steel bolts much like the timber platforms jutting out from the walkway to the sea.

"You don't design something like this that does not fit in with surrounding developments. It had to sit in harmony yet have its own identity."

"Overall, it's been a great effort by the builders and by a visionary client. I think it sits very comfortably with the environment," says Murali.

Peter Snowden also believes the hotel enhances its surroundings.

"The whole thing works together so well and it's great to be part of that. In years to come - or even now - it's nice to walk along and say we helped develop that."

In addition, the hotel is a good advertisement for New Plymouth, a representation of a thriving, coastal community that creates modern buildings sympathetic to its environment, he says.

"This is the sort of building Clelands likes to build, the sort of development we like to be involved in. It's adding value to the city."

CONGRATULATIONS THE WATERFRONT

TILES SUPPLIED BY TILE WAREHOUSE

TILE WAREHOUSE

138 GILL STREET • PH 759-8020 (OPPOSITE SPOTLIGHT)

TILES LAID BY WARREN BARNES TILING

Warren Barnes Tiling

QUALITY WORKMANSHIP GUARANTEED!
PHONE 0274 490 369 OR 06 756 8048

THE WATERFRONT TILE BATHROOM

I. T. LAMB DECORATORS LTD
Commercial and Domestic

- TEXTURED COATINGS
- PAINTERS
- AIRLESS SPRAYING
- PAPERHANGERS

Proud to be associated with **The Waterfront**

All Work Guaranteed

49 Barrett Road, New Plymouth
Mobile (021) 423-760
A/H (06) 751-0529

New Zealand PAINTING CONTRACTORS ASSOCIATION (NZPCA) MEMBER

C.G. & J.M Hill

Electrical Contractor

ME MASTER Electrician

safepower ASSOCIATES
ELECTRICAL CONTRACTORS ASSOCIATION OF NEW ZEALAND

Pleased to have assisted with the design & installation of the complete electrical system for **The Waterfront**

We wish Neil and Susan every success in their new venture

133 Gill Street, New Plymouth, Phone (06) 759 0414
Fax (06) 759-0412, email C.G.HILL@xtra.co.nz

Luxaflex WINDOW FASHIONS.

"It was a pleasure to work with Sue and Neil at The Waterfront."

NZ WINDOW SHADES

If you just adore the feel and texture of natural timber in your home, then LUXAFLEX COUNTRY WOODS Timber Venetians are the obvious choice. If your taste in timber furniture is for one of the most popular timbers such as maple or light oak, then there's COUNTRY WOODS Timber Venetian to complement.

4 Seaview Road New Plymouth Ph (06) 751 1075

Phone Mary (06) 757 3575 025 222 9960

CONGRATULATIONS to Sue and Neil on the opening of **The Waterfront Hotel** we are proud to have supplied the bedroom and bathroom linen for this luxury accommodation

GILMAC
133 Park Road Miramar, Wellington
Ph (01) 939 8810 • www.gilmac.co.nz

nagel consultants ltd
structural & civil engineers

EXCELLENT VISION
SUE & NEIL

5 Young Street New Plymouth phone 7590477 fax 7590478 email nagel@clear.net.nz

stresscrete
people technology results

Specialists in pre-cast and pre-stressed concrete components

Proud to be associated with **The Waterfront project**

All Enquiries Welcome

stresscrete

Ph 06 759 8113 • Fax 06 759 8116
Visit www.stresscrete.co.nz

NO JOB TOO BIG OR TOO SMALL!

Professional plastering
Commercial
New Homes
Renovations

P+P HUSTON PLASTERING

CONTACT US ON (06) 751 4220 OR 0274 521831

Professional Plasterboard Suppliers and Fixers

PACIFIX FIXING LTD

Kyle Smith • 025 239 2513

the Waterfront opens in NP Hotel answer to visitor needs

ENDLESS requests for a room or a table with a sea view should be satisfied with the arrival of the Waterfront hotel.

Destination Taranaki general manager Irena Brooks says one of the most frequent requests received by the New Plymouth information centre is for accommodation or dining near the waterfront.

"It's not an option we have previously had. Now, we can give an emphatic Yes."

She says the city boasts a good mix of accommodation; this latest addition will add another dimension and help dispel cow town perceptions surrounding New Plymouth and Taranaki.

"The most popular accommodation demand from the markets we are targeting is for properties with three to five star ratings. With The Waterfront we have a good offering across that range."

The Waterfront's opening should also help ease demands for beds during peak times — demands that seemed to occur frequently during the summer when weekend sporting and cultural events combined with holiday makers and movie staff.

In addition, says Ms Brooks, it's nice to have another cafe-restaurant on the foreshore.

Tourism industry insiders from the US, Germany, Canada and the UK get the chance to try out the new hotel when a group of them visit this week. Five will stay at the Waterfront; others will be dotted around the city as part of a tourism trade familiarisation tour.

The group, which includes retail and wholesale travel agents and some media, are particularly interested in travel options for the free, independent traveler, a market Destination Taranaki hopes to grow.

Ms Brooks agrees seaside accommodation and dining has been a long time coming.

"I think everyone in Taranaki would agree that traditionally New Plymouth has turned its back on the sea. It's not that long ago that the railway yards were removed.

"Finally we are embracing the sea and I think all of the coastal developments — the walkway, Puke Ariki, dune reshaping, the East End skatepark — will be the making of the city.

"The movie (The Last Samurai) has helped and now when people come, I don't think we will be perceived as a country town but a coastal city."

She points out that New Plymouth has long had attractions near the sea, such as the Aquatic Centre, or ones that show off the coastline such as Chaddy's Charters.

The inner city developments of the hotel and Puke Ariki help highlight those features into a strong visitor package with a range of options.

"They tie in with the existing attractions that have been on the waterfront for some time. Suddenly they all come together and make New Plymouth a compelling visitor proposition."



CHOICE: A standard hotel room at The Waterfront.

CATIFA

Available in a range of colours, chrome or stainless steel frames FROM \$259.00

AUCKLAND 39 Nugent Street, Grafton
ph: 09 379 9680 fax: 09 308 9328

WELLINGTON 61-63 Thorndon Quay
ph: 04 473 0200 fax: 09 473 2300

www.eco.co.nz

TARANAKI Jun...
Grade 7, Sect 1...
Cent Cuts, SP...
MD, Bam, St...
Sect 2, Mot G...
Bam, Vira, V...
Lions v Wat 5...
Heyden Priest A...
Sect 3, Inp T...
St Jos Tigers v...
Falcons, OM, 9...
WEL, 10 30am...
Sect 4, Wat...
Cent Cuts v W...
munks v Wood...
Webb Smartke...
Sect 5, Man...
Mang Hammers...
Paranga 5.30 R...
Tarki Taven v...
Sect 6, St Jo...
S.W. Bam, St...
9 45am; West B...
Oak Gully Fox...
Grass v Sect...
Marlow, WEL, 9...
MD, 9 45am; Se...
Harriers, FR, 9...
Sect 2, BB R...
re, Strakes v...
ONE Struggles...
Sect 3, Woi...
9 45am; Cent...
Peringa Kats v...
Sect 4, Cent...
10 30am; Oak F...
9 45am; Wood...
Sect 5, Wat...
Wat Hawks, v...
9 45am; Mot T...
Kiwi by...
Sect 6, Om...
Eagle v Shell...
Rovers, MER, 9...
Sect 7, St P...
STP, 9 45am; W...
9 45am; West...
9 45am...
Grade 11, Se...
10 30am; Wood...
Perin...
ers, PPS, Bam...
Sect 3, Merr...
Rangers Rebel...
v BB Ravens...
Sect 4, BB R...
Wolves v Pate...
Rangers, Rimm...
Sect 4, Hwa...
10 30am; Cent...
Wanders v H...
Sect 5, W...
Aughts, Kap...
v Webb Stars...
Sect 6, St...
Sappers, SAPP...
v St Phil Shari...
Grade 13, S...
10 30am; NPP...
ers Vipers v M...
Sect 2, WPP...
Mut Shewlers...
Steelformers...
10 30am...
Sect 3, K...
Chapman v FD...
v Hwa Coler...
Sect 4, Shi...
Peringa, FD...
10 30am; BB...
Grade 15, S...
Bam, Wat W...
Sports Coll v...
Gardens v N...
Hwa Mustan...
by...
Youth, Mot...
ern Park Ran...
tham v Mot B...
YARROWS P...
Watara v B...
13 30am; Siff...
Chapman's...
Sect 3, W...
Burtons...
The Mill Bar...
Hemmings, 6...
URFC IA Ric...
3 Merr, Koon...
Moratti...
NP City...
Sunday, Jul...
SA v NPCHS...
NPCHS A2 v...
Mays 9A v S...
ct 1, SHS, 9...
2 0pm; Hwa...
Snokelron v...
New Ply...
1st grade; S...
A v WHS A...
Tyson, 2 v...
NPOB Class...
11 55am; N...
Rebeck v W...
Sub Cousins...
Finning v M...
Team v Arde...
Sect 3, S...
NPCHS Sir...
Tukapa Asi...
Sub Cousins...
3rd Grade...
Bounce Back...
7 v Kaitake...
Kaitake Blue...
NP7, Woti...
11 55am; NP...
2 0pm; N...
4th Grade...
Jiri At v DK...
NPCHS Sir...
Panklands S...
NP7, Ver...
12 45pm; N...
A/NPOB Cla...
6th grade...
10B v Wood...
NPCHS Sir...
Cousins, 6...
NP7, NPCHS...
SHGC, 9B v...
by...
6th grade...
Sub FINMS...
12 45pm; N...
1 35pm; NP...
Finning, 1...
Tukapa Bla...
West Soka v...
7th grade...
Dix Hammer...
NP7, WHS...
NP7, Spots...
11 55am; N...
TTD Blue...
Green (Mer...
8th grade...
Overs v SP...
11 55am; N...
Rebeck, 11...
(Merr) Re...
Mayers, NP...
Burch v NP...
8th grade...
NPCHS Ch...
BACS v SH...
NP7, SHGC...
NPP, NPPG...
B, 11 55am...
9 45am; B...

T & D REID PLUMBING LTD

20 Seymour Street
WAITARA

Craftsmen Plumbers,
Gasfitter, Drainlayer, Roofing

**We are so proud to have
done all the plumbing for
the beautiful Waterfront**

Office 754 8523

Mobile Trevor (025) 435-503
Mobile Dennis (025) 220-3173

Proud to be chosen
to complete the
block work on
The Waterfront

Block and brick work specialists

Russell Masonry

Bricklayers

PO Box 8027 • New Plymouth
Ph: 021 293 4660

*Congratulates Sue and Neil on the
opening of THE WATERFRONT*

Proud suppliers of an LG Aria
300 Digital Telephone system.

For all your telephone and wiring solutions
contact GILCOM today for Splendid service.

Phone: 06 759-9088

162 Powderham St, P.O. Box 4296 N.P.

fabrication innovations

balustrade work at
The Waterfront done by **STEEL FAB LTD**

ph. 06-759 2000 • fax. 06-758 0327 • mob. 027-277 3337
VICKERS ROAD WAIWHAKAIMO NEW PLYMOUTH

pipphoto

p
h
i
l
i
p
p
a
g
u
t
h
r
i
e

p
h
o
t
o
g
r
a
p
h
e
r

ph 7511699 or 0274 533968
pipphoto@xtra.co.nz

Otis

A United Technologies Company

OTIS take pleasure in
congratulating

The Waterfront

on their opening in New Plymouth
and are proud to be a part of this
fantastic new facility.