

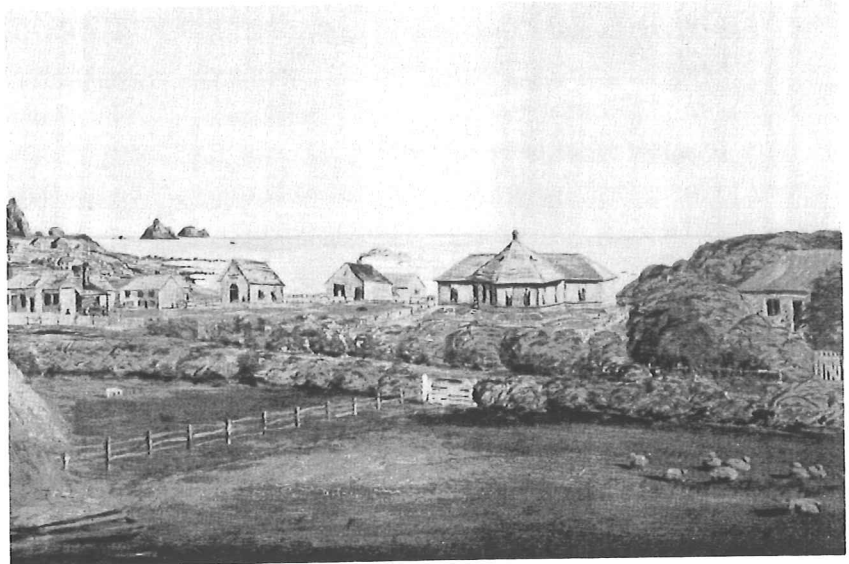
Done # 8 Mon 1974

ROUND AND SQUARE HOUSE

This oil painting on tin plated iron by an unknown artist was conserved recently by the Northern Regional Conservation Service in Auckland.

THE VIEW, with Courtenay Street in the foreground, shows the Baptist Church (corner Gill/Liardet Streets) and the "Round and Square House" on Devon Street. The "Round and Square House" was one of the architectural curiosities of New Plymouth until it was demolished in 1938.

Brought to New Zealand by Thomas Hirst aboard the *Gwalior* in 1852 the single storeyed octagonal section originally



View of New Plymouth from Gover Street c1870.

fronted Devon Street near the present Warehouse. Contemporary reports indicated that the imported house had steel framing.

In the early 1870s a second storey was added and, presumably, the "square section" erected alongside.

About 1905 the two buildings were moved to the adjoining section facing Courtenay Street.

Thomas Hirst is, perhaps, better known now for his 1860s family home *Willowfield* in Cameron Street and the five dwellings in Pendarves Street built for his family soon after.



The photograph, taken in the 1930s just before its demolition, shows the present Christian Science chapel alongside.