

Objections stall old mill project

T.H. March 21 1985

Staff Reporter

Development of a three-storey food and entertainment complex in central New Plymouth has been delayed by objections to the proposal.

Wellington-based Lion Breweries Ltd plans to refurbish the old Egmont steam flour mill on Powderham St.

It applied to the Licensing Control Commission for food and entertainment licences for three storeys of restaurants and entertainment areas.

The closing date for objections was March 1 and it was confirmed today that six objections had been received.

This means the proposal will now have to go before a full Licensing Control

Commission hearing, which will at least delay the project into next year.

Brewery special projects manager Mr Richard Jones said today the objectors were two churches, two residents on Vivian St, the Taranaki branch of the Hotel Association, and a group representing small businesses in the city.

Investigations by the Herald today confirmed that one of the objecting churches was the St Andrew's Presbyterian Church. The other could not be confirmed.

Mr Jones said his com-

pany was disappointed there would now be a delay to the project.

"We have money sitting there ready to be used, the developers are ready to go, but we can't get moving."

"We were hoping to get the complex opened before Christmas, but that certainly won't happen now."

Mr Jones said he found it difficult to understand why there were objections.

Lion Breweries was the only one of three developers that wanted to retain the historic character of the 100-year-old building.

"When finished, the building will be unique in New Zealand."

Fletcher Construction and Development Ltd has been contracted to refurbish the building. It will return the exterior to nearly its original appearance, and redevelop the interior.

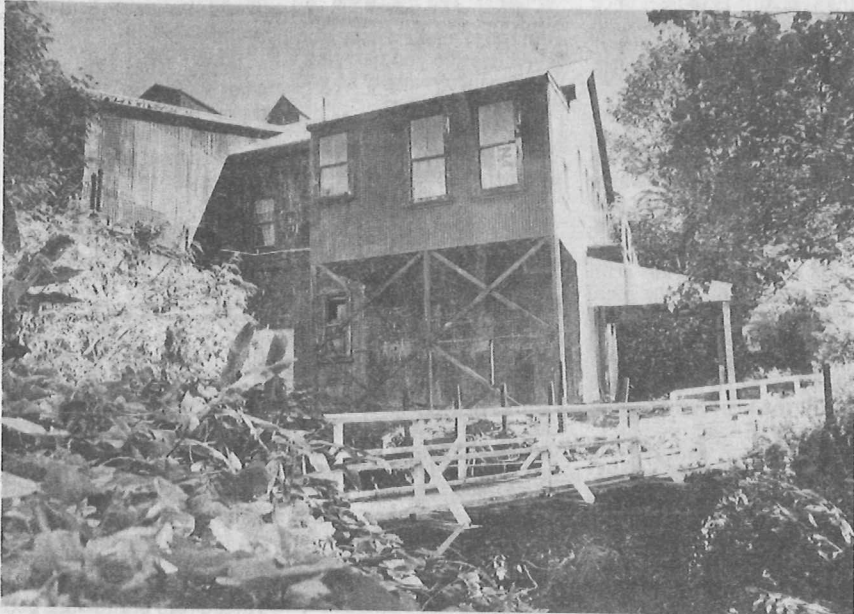
The basement will offer live entertainment and operate from 8.30pm to 3am Monday to Saturday. Facilities will include a stage and dance floor and there will be a food and liquor service.

Next to this will be a

conservatory for lunches and morning and afternoon teas.

The ground floor will feature a restaurant, operating from 11.30am to 11.30pm Monday through Saturday with reduced hours on Sundays. It will have full waitress and steward service and live entertainment.

The top floor will be developed as a high-class restaurant with emphasis on fully serviced, leisurely dining. It will operate from 6pm to 2am Monday to Saturday.



The old Egmont flour mill, opposite the end of Currie St in New Plymouth . . . unlikely to open for Christmas.