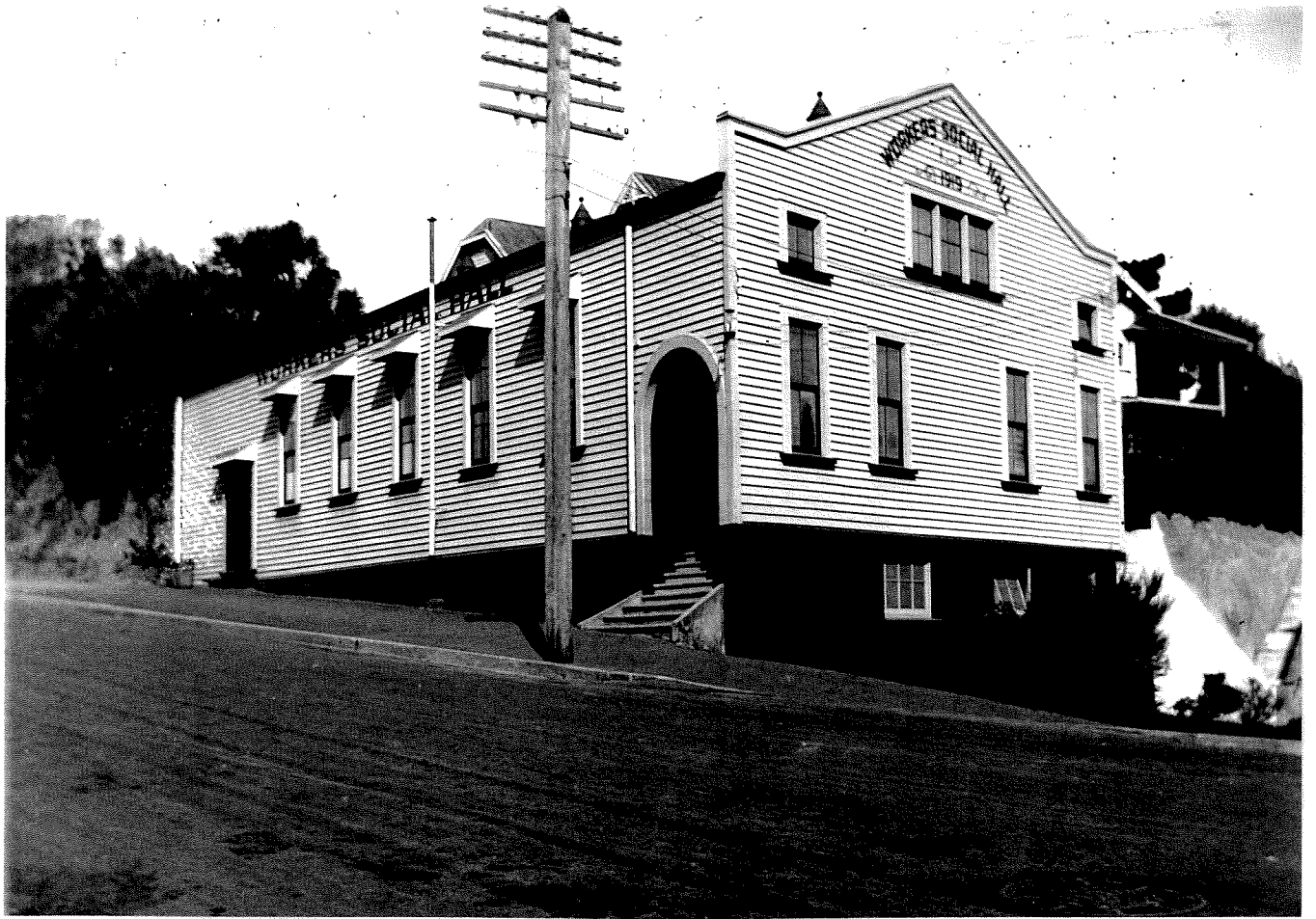




Walsh Appliances, 26 Courtenay Street

191

Walsh Appliances is now a showroom, and is clad in modern sheet materials. It was built in 1919 as a Workers Social Hall, and in its original form was clad in lapped weatherboards with tall double-hung windows. The hall itself, including the roof trusses and boarding, remains relatively unmodified. Because of this, and the fact that the form of the building is intact, it would be possible to restore some authenticity to a building of considerable social, historical and architectural importance.



Workers Social Hall, 1919.

View of the north and west elevations; compare with modern photo from the same angle.

Taranaki Museum Photo.