

They've kept it cool for 75 years

This year the Taranaki Producers' Freezing Co Ltd, which operates the cool stores near Port Taranaki celebrates its 75 anniversary.

The cool stores are the receiving point for much of Taranaki's butter and cheese production and the company has seen the dairy industry in the province grow increasingly stronger.

Keith FitzPatrick reports on the company's growth during its three quarters of a century and the influence of changes in the industry and markets.

New Zealand's main dairy exports — butter and cheese — go through many important stages on their way to overseas markets.

Not the least of these stages is a stay at a cool store — conditioning areas for produce before it is shipped overseas.

Cool stores also serve an important role of being collecting points for large quantities of produce.

This makes it easier for the Dairy Board to compile

large individual overseas orders, rather than trying to fill an order by gathering produce from numerous points around the country.

There is another major task performed by cool stores.

A milk production season lasts for about eight months. It starts slowly and builds up to its peak or flush before tailing away.

With these ups and downs of the dairy season, cool stores ensure a year round even flow to markets.

Cool stores serving the Taranaki dairy industry are operated by the Taranaki Producers' Freezing Co Ltd in a plant sited near Port Taranaki.

It receives most of the dairy products manufactured in Taranaki before shipment overseas.

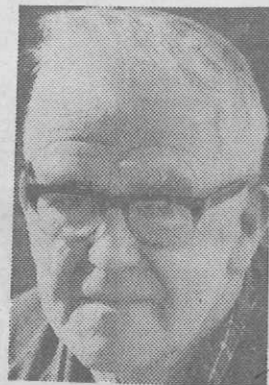
This year the company celebrates its 75th jubilee.

It is a period that has seen an increase in throughput from the first year's 5086 tonnes to a maximum of 94,207 tonnes.

With this expanding throughput the company has found itself running short of storage room during the years and has had to increase its capacity accordingly.

Currently it is constructing a replacement building of three erected in 1915, 1929-32 and 1931-32.

Between 1953 and 1974



MR K. W. JACKSON — current chairman.

the company added four storage buildings to its complex at a total cost of \$2,762,070.

These increased the storage capacity by 18,006 tonnes and today the cool stores have a total capacity of 29,000 tonnes.

The buildings were the Rundle Store, built in 1953 at a cost of \$287,990 and which increased the capacity by 2900 tonnes.

This was followed in 1959 with the construction of the 3800 tonne capacity Parsons Store, built at a cost of \$503,795.

The major part of this construction programme came in 1971 with construction of the 10,500 tonne capacity Scott Gibson store. Cost of this addition was \$1,770,285.

In 1974 the Connett store, with a capacity of 806 tonnes, was erected at a cost of \$200,000.

Apart from the store buildings, six ancillary buildings were also erected since the early 1950s.

In 1955 there was a mess room and ablutions block; 1959 the Parsons Link building; 1962 a produce inspection room; 1966 a pallet and carpenters' shop;



MR J. B. CONNETT — the company's first chairman. (1901-1909).

1968 the Ministry of Agriculture and Fisheries dairy division's testing station; 1973 an accommodation and ablutions block.

Building materials have changed over the years, ranging from wood to concrete and now to structured steel.

Similarly cheese types have also changed.

There have been the 80lb round rindless cheddar, 60lb and 40lb rindless cheddar packed in cardboard cartons and now there are the exotic cheeses being produced to meet changing market demands.



PRODUCE BEING unloaded for storage and grading in the Taranaki Producers Freezing Company's store, prior to export.

and 24,000 tonnes of butter and predictions for this year are that butter production will be up and cheese down.

Operating a cool store does have its problems.

Occasionally delays in marketing could mean holding produce at the stores longer than anticipated and the storage is at a premium in a bottleneck situation.

Both butter and cheese is received at the stores at 54F. Butter is reduced to 10F in a seven day period and cheese reduced to 36F to 38F in four days.

Cheese is held for 14 days at the dairy factories before being sent to the cool stores for grading.

All produce is sealed in cartons and the only cartons opened are those for

Government inspection.

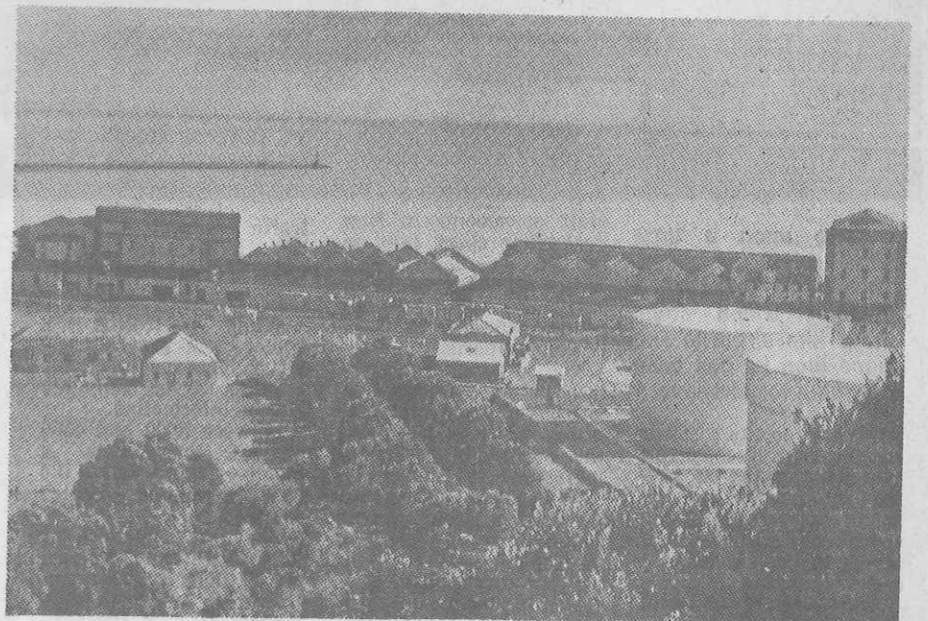
The company is a co-operative of Taranaki dairy companies and its board is elected by the companies.

The chairman is Mr K. W. Jackson, a former chairman of the Moa Dairy Company, Inglewood. The deputy chairman is Mr J.A.W. Boddie, Eltham, a director of the Taranaki Co-operative Dairy Co.

A man who gave outstanding service to the cool stores was the late Mr L. J. Rundle, who was its chairman from 1934 until his retirement in August 1970.

He was succeeded by Mr W. E. Scott who retired within a year because of ill health. Mr Jackson has been chairman since.

The number of staff at the stores fluctuates from about 50 to 88 during the season. There are 14 engineers and maintenance staff, eight of whom are specialists in refrigeration.



THE WORKS AS they appeared at the completion of new additions in 1946. The new section is at the left of the gables.



THE ORIGINAL cool stores. This building was constructed in 1895-96 and was destroyed by fire in 1904.

123 KIWI JACKPOT PLUS **JACKPOT**

\$66,000 LOTTERY TICKETS ONLY **\$25,000 NOT STRUCK**

1st Prize \$24,000 - 111034
2nd \$6000 - 123846 3rd \$2500 - 155987 4th \$2000 - 128627

As this ticket did not win a cash prize in the main draw the holder receives a...

1st DRAW \$95,000
THE 1976 NZ CUP SWEEPSTAKE-OFFICIAL RESULTS

2nd DRAW-\$305,000 IN MAJOR PRIZES

Major prizes distributed in relation to the placing of horses won by ticket holders at the draw on the morning of the race, Saturday Nov. 6. Radio New Zealand Commercial network and Private Radio Stations broadcast winners of starters from approximately 9.45 a.m. to 10 a.m. Approximately 10 minutes prior to the race, stations broadcast the names of horses and related ticket numbers. This information is telecast by Television One just prior to televising the race. (Expected start approx. 2.55 p.m.)

All tickets participate in both draws

10 PRIZES OF \$1000 EACH
6554 10938 65396 68171 83643 84237 87405 105359 107379 149301

20 PRIZES OF \$500 EACH
21734 51020 54470 63758 69867 75977 108176 117375 138458 140270
40753 54180 59668 66380 75878 102784 110042 126925 138619 143446

100 PRIZES OF \$100 EACH
134760 992 6262 19347 28830 32474 49063 200 PRIZES OF \$50 95421 101328 108814 110875 105000 120055 144000

