

Sudden death of city architect

The New Plymouth architect, Mr R. W. Syme, who was associated with the design of several prominent buildings in the city, died suddenly yesterday. He was 71.

Mr Syme was a partner in the firm of Taylor and Syme which designed the War Memorial Hall, the New Plymouth and Westown Post Of-

same year was awarded a certificate of merit for small house design by the New Zealand Institute of Architects.

Mr Syme was admitted to the Institute of British Architects in 1935. In the late 1930s he was a partner in the firm of Griffiths and Syme and when he returned from World War II in 1944 went into practice with the firm, Taylor and Syme until 1957.

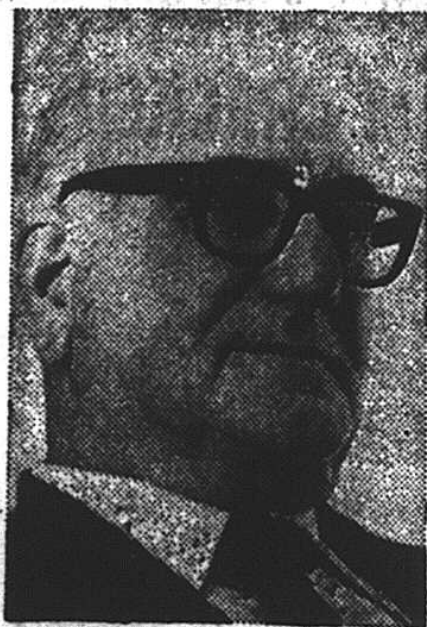
From 1957 until yesterday he worked on his own account.

In 1956 he was made a fellow of the New Zealand Institute of Architects and chaired local meetings for a number of years.

Last year he was made the second life member of the Taranaki Automobile Association, an organisation he had served for more than 20 years.

Mr Syme had been a member of the Vogeltown Bowling Club and was a keen gardener.

He leaves his wife, Margery, and daughters Pauline (Mrs R. J. Donovan, Auckland) and Sandra (Mrs G. Stubbs, Heidelberg, Germany).



THE LATE MR. R. W. SYME.

fices, the gates to Pukekura Park, and the offices of the Taranaki Automobile Association.

He was born in Hawera in the early 1900s and attended Hawera Primary School and New Plymouth Boys' High School.

He graduated from the school of architecture at Auckland University in 1935 and the



BILL

**I CAN'T UNDERSTAND
WOMEN'S ELECTORAL**