

Developer uses old bricks for new wall

Building

Catherine Groenestein

Bricks from Hāwera's history have been given a new life.

The frontage of the former Egmont A&P Society building, which had stood in Nelson St since 1923, was demolished a few weeks ago to make way for a car park for the new Countdown Supermarket.

However, the bricks were saved by the developers and have been given a new life very close to the A&P Society Showgrounds.

Retired farmer Peter Muller is developing a subdivision on land that was formerly the site of Hāwera Hospital.

He has used the bricks recovered from the old A&P facade, along with some from the hospital building that was demolished in 2011, in a new wall on the Burnside Ave frontage of the subdivision.

The facade of the building, which is listed in the South Taranaki District Council's heritage inventory, was retained when the old Countdown was built in 1994 after a community outcry.

It was listed as having an overall cultural heritage value of 7/20, but it was not on Heritage New Zealand's Register and did not have any formal protection.

The independent commissioner overseeing the resource consent process for the new supermarket did not require the developer to retain the facade.

Muller, who is having new houses built on the land, said the supermarket site developers, Graeme Champion and Royden Collingwood, were quite keen that the bricks be recycled.

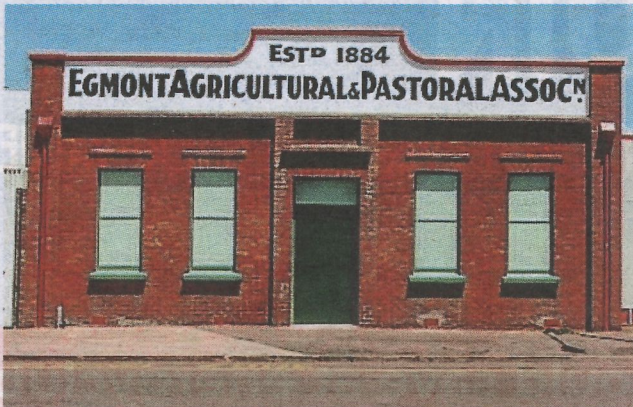
About 2100 bricks were recovered and they have been cleaned up and used to build the wall.

"It's very labour intensive getting them clean, using a hammer and chisel," Muller said.



Peter Muller has used the bricks from the historical Egmont Agriculture & Pastoral Society building facade in this new wall across the road from the Egmont A&P Showgrounds in Hāwera.

CATHERINE GROENESTEIN/STUFF



The facade of the Egmont Agriculture & Pastoral Society building in Hāwera was demolished in June to make way for a new supermarket car park.



The historical foundation stones from the old hospital are on display in a car park on the current Hāwera Hospital grounds.

Muller, who farms at Manaia, bought the old hospital site some years ago.

"Years and years ago I stayed in hos-

pital after I had my appendix out and I saw the view, but I didn't know I'd end up owning the land here," he said.